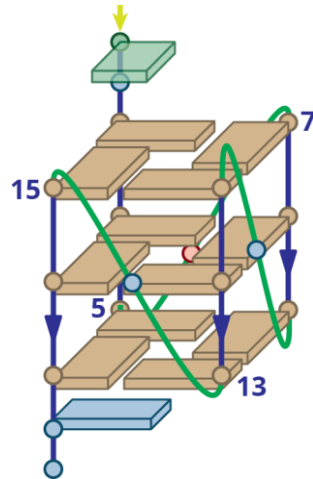


2LEE

| Sequence (5' to 3') | ϵ_{260nm} ($M^{-1}cm^{-1}$) | DOI |
|---------------------|--|-------------------|
| TAGGGCGGGAGGGAGGGAA | 202800 | 10.1021/ja208483v |



Legend

strand direction
 (5' to 3')

1 2 nucleotide number
 (5' to 3')

5' end

loop

syn

anti

ligand

adenine

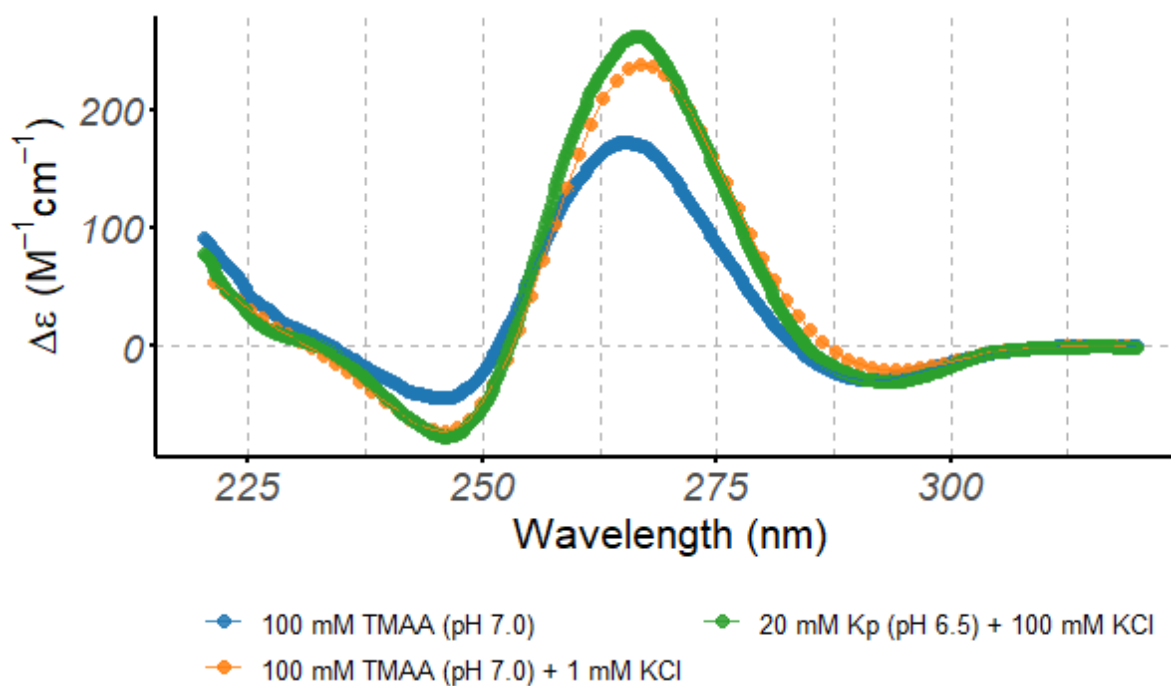
cytosine

G-quartet guanine

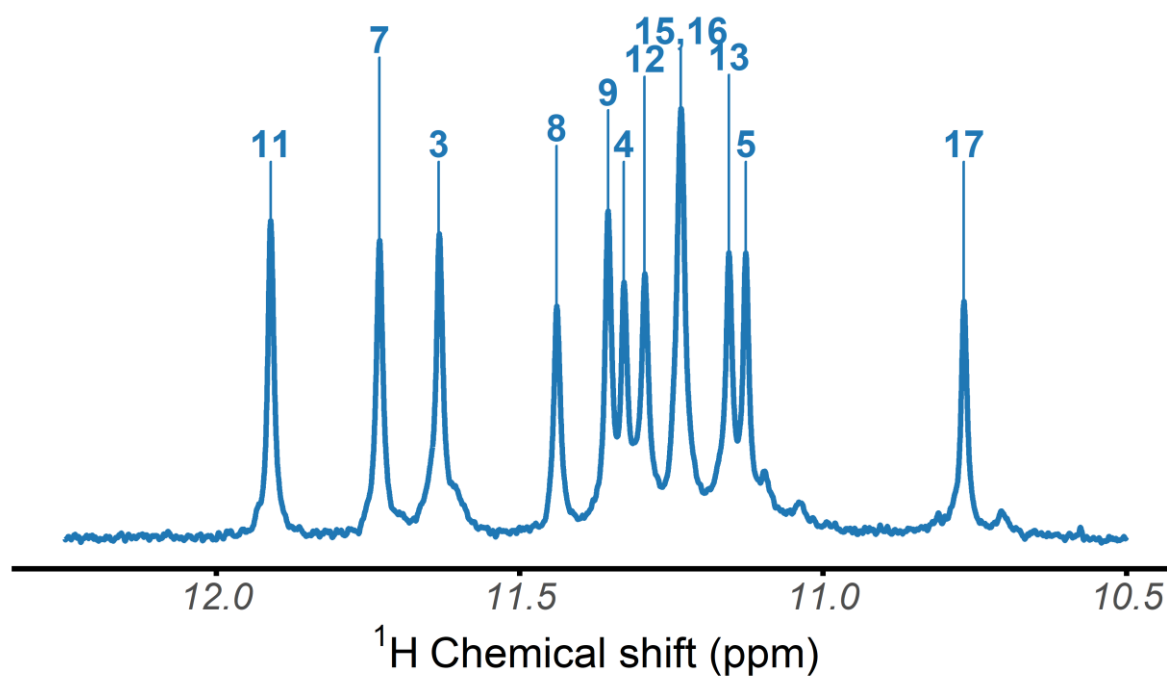
not-G-quartet guanine

thymine

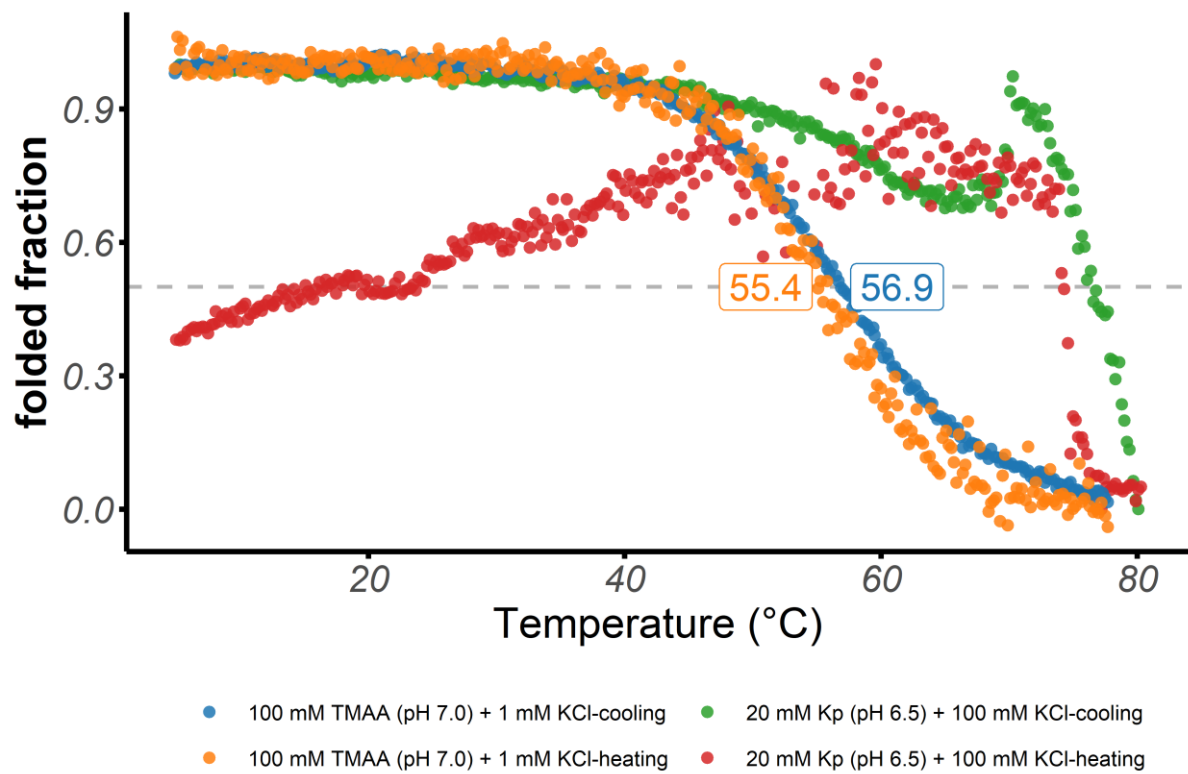
Structure diagram of 2LEE



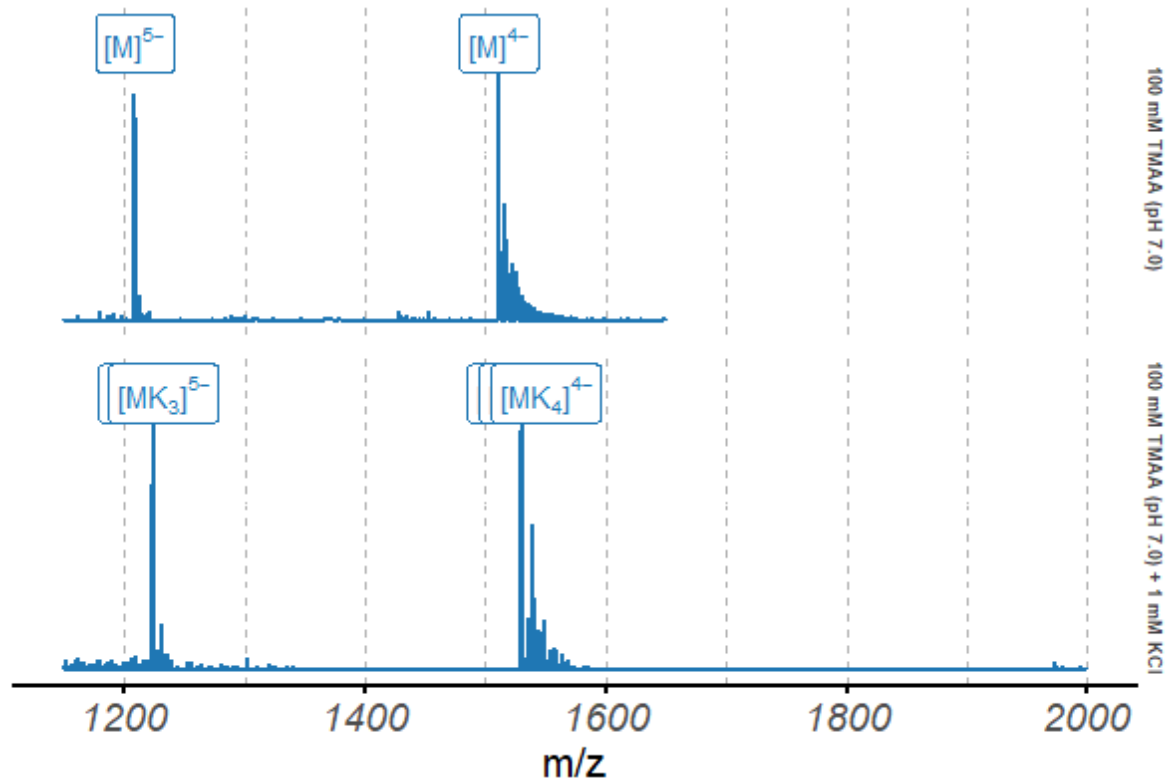
Circular dichroism spectra of the 2LEE oligonucleotide (10 μ M), acquired at 25°C in 0.4-cm path-length cuvettes



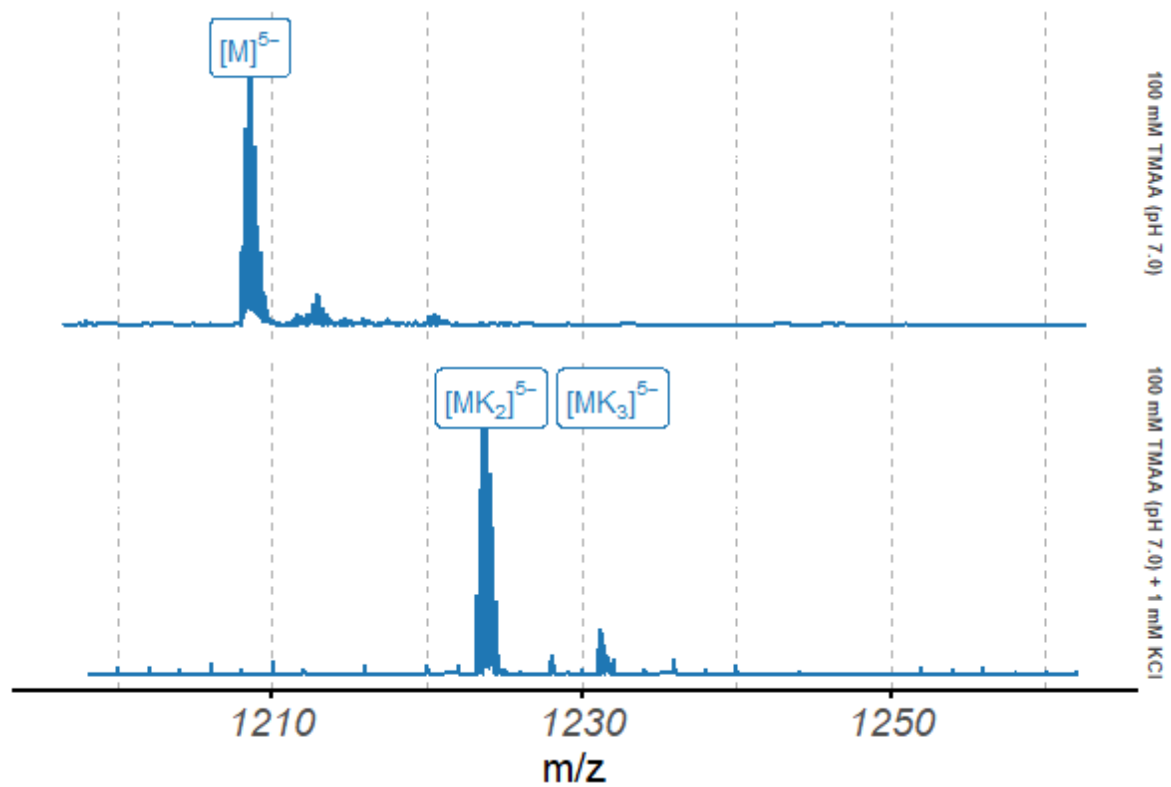
^1H -NMR spectrum of the 2LEE oligonucleotide, acquired at 25°C in 100 mM TMAA (pH 7.0) + 1 mM KCl



Folded fraction of the 2LEE oligonucleotide as a function of temperature, determined by UV-melting ($\lambda = 295 \text{ nm}$)



Native ESI-MS spectra of the 2LEE oligonucleotide (10 μ M)



Native ESI-MS spectra of the 2LEE oligonucleotide (10 μ M), focused on the 5^- charge state